

# Firmware upgrade manual

**Applicable to marlin system**

<b>NO</b>	<b>Production department</b>	<b>Versions</b>	<b>Release time</b>
1	after-sales support	1.0	2023/10/25

# I .Summarize

This manual is intended only as a guide to printer firmware upgrades for the marlin system.

## II .Preparing the Tools

- A. Micro SD card with more than 4GB capacity
- B. SD CARD - USB interface card reader
- C. Internet connected, USB excuse available computer

## III.Upgrade method

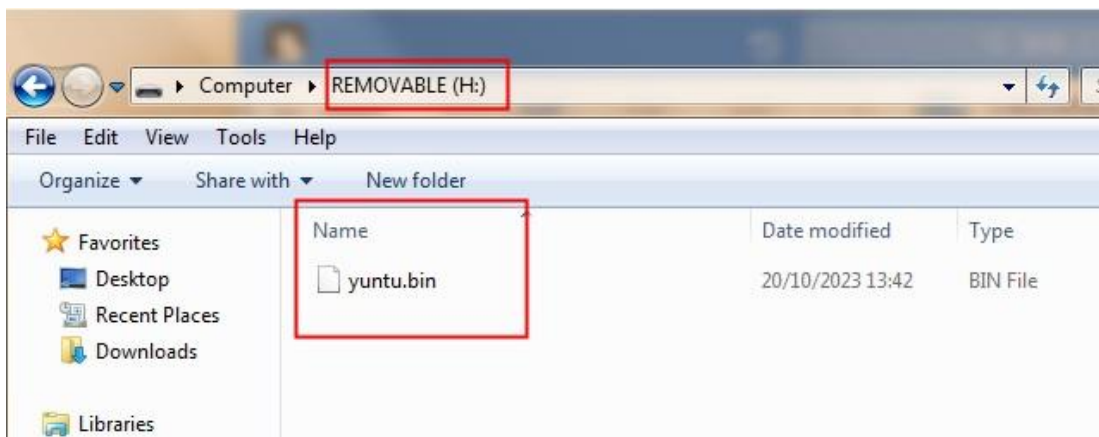
Decompress the upgrade package downloaded from the official website to the root directory of the TF card.

If there are multiple firmware to upgrade, such as TFT and motherboard, only one type of firmware can be placed into the TF card at a time.

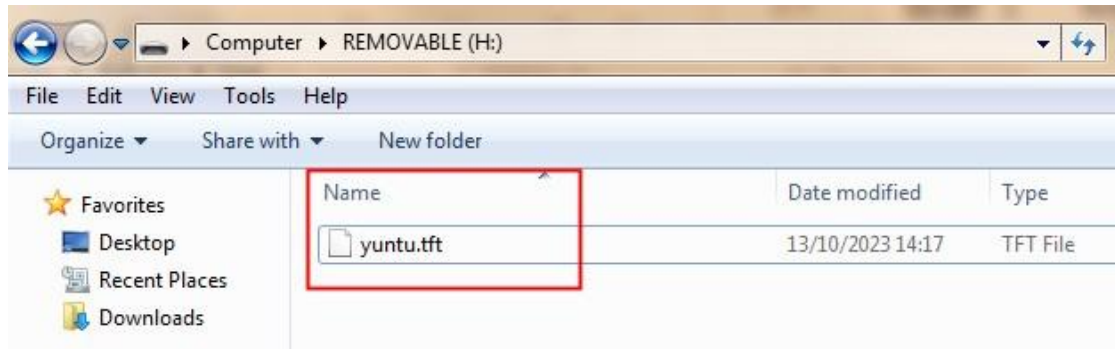
1) To upgrade the TFT,load the yuntu.tft then follow instructions below for TFT update.

2) Then to load the Motherboard firmware.

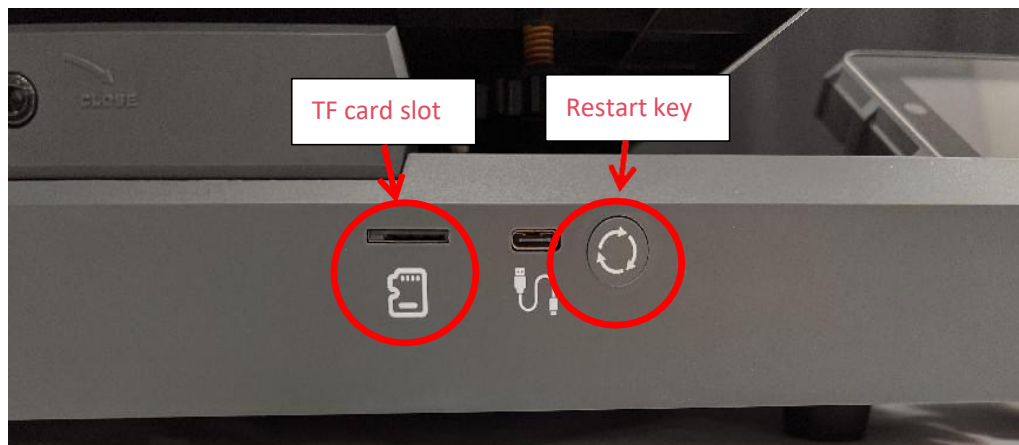
Make a copy of the SW-X3-ProV1.29.bin or SW-X3-PlusV1.29.bin on the SD card then change the name to yuntu.bin.(The HEX Firmware is not required, the firmware number or model may be different to shown)Then again follow the instructions below for motherboard



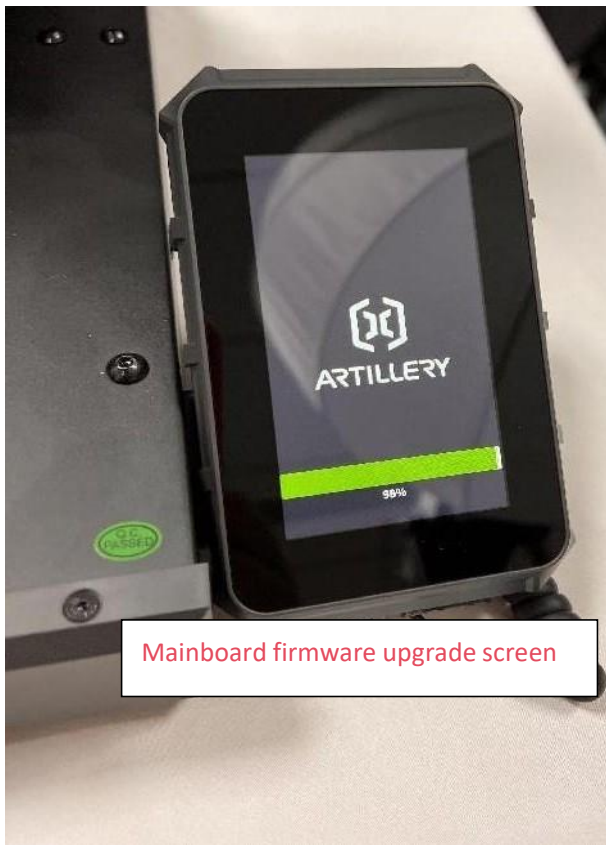
update.



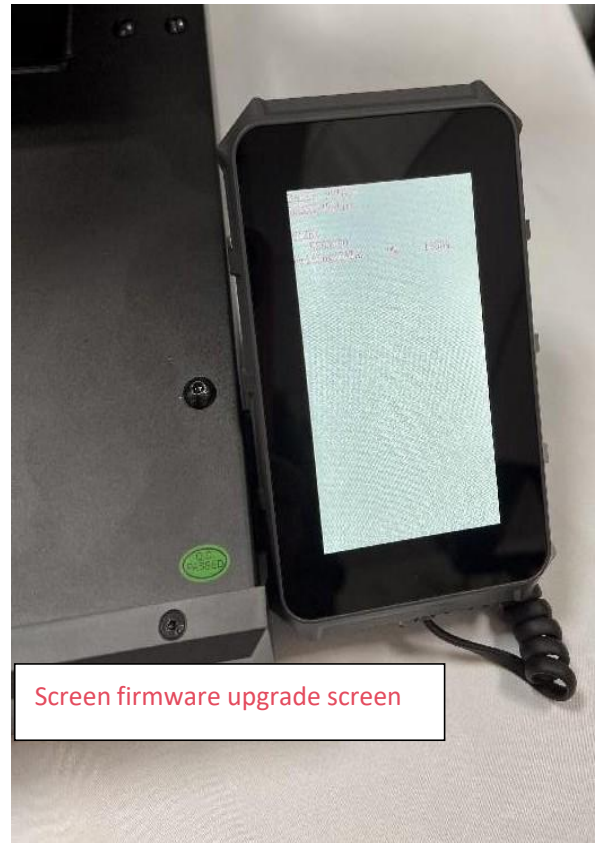
B. Insert the TF card into the printer card slot, Click the restart button to start the upgrade.



C. After the restart, the printer automatically starts to upgrade. After the motherboard firmware is upgraded, the machine automatically restarts, but the screen firmware does not.



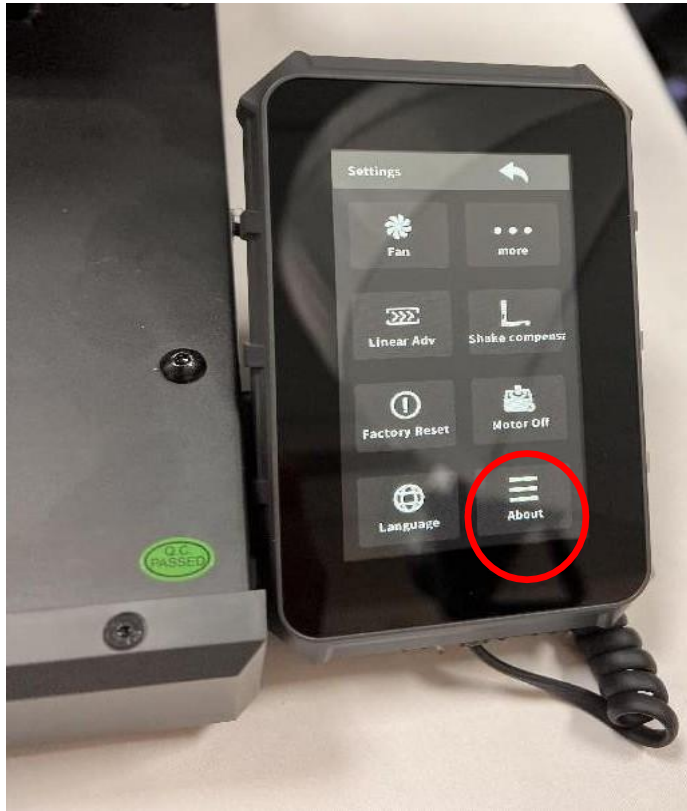
Mainboard firmware upgrade screen



Screen firmware upgrade screen

D. After the upgrade is complete, click "settings", click "About", and check whether "Main" and "Screen" are the same as the upgrade firmware version number.





## **IV. Matters need attention**

- A. If there are multiple firmware to upgrade, only one firmware can be placed into the TF card at a time, which needs to be upgraded several times.
- B. If you insert TF card and click restart, the device does not start upgrading, you can use another TF card to perform the operation in the manual.
- C. Firmware versions of different models cannot be mixed!